



PITTSBURGH MUSICIAN

OFFICIAL JOURNAL OF LOCAL 60-471, AFM
PITTSBURGH MUSICIANS' UNION

3RD QUARTER 2025
"IT ALL MATTERS!"

www.afmpittsburgh.com



Overture

By George A. Clewer

President/Secretary, Local 60-471, PMU

A slightly belated welcome to Summer! I hope that all of us have found some down time or soon will to relax and recharge. I'm certain that we can all use it!

As I mentioned in the last newsletter, the year 2025 is an election year in Local 60-471. This means that all elected positions in our Local are open for election including those of Officers, Executive Board Directors, and Delegates to the AFM Convention along with Alternate Delegates. The nominations meeting will be the October General Membership Meeting which falls on Monday the 6th. I do want to emphasize that any member who is planning to run for any elected position must be in good financial standing with the Local. In the 'Burg Sounds column we have more info on the election including a bit about what each position requires of those who hold that position.

I also want to point out that we are in the new fiscal year for MPTF and that means we have funding for projects moving forward. It's first come first serve so I encourage you to provide me with any info regarding a possible MPTF project as soon as possible. The dollars tend to get "used up" pretty quickly. Call me at 412-855-5137 or shoot me an e-mail at president@afmpittsburgh.com.

Please take a look at the rest of the newsletter and I hope to see you at the October General Membership Meeting replete with food and drink!

George

**PITTSBURGH MUSICIANS' UNION
OLDTIMERS PARTY
MONDAY, SEPTEMBER 15 BEGINNING AT
6:30 WITH DINNER SERVED AT 7:30**

**GAETANOS ON BANKSVILLE
Good food /Prizes /Music**

CALL 412-855-5137 TO MAKE YOUR RESERVATIONS.

**YOU KNOW IT'S FREE!
IT'S THE PLACE TO BE!**

OCTOBER GENERAL MEMBERSHIP MEETING OCTOBER 6TH, 2025 GAETANO'S ON BANKSVILLE

7:00PM SOCIAL
7:30PM DINNER
8:15PM BUSINESS MEETING

AGENDA

**APPROVE MINUTES FROM THE MAY MEETING
SET COMPENSATION FOR OFFICERS AND BOARD
NOMINATIONS FOR ALL LOCAL 60-471 ELECTED
POSITIONS.**

**PLEASE CALL 412-855-5137 FOR DINNER RESERVATIONS.
IT IS A HELP TO KNOW HOW MANY GUESTS TO EXPECT.**

NEW CONTACT INFO

**TO REACH OFFICE MANAGER MIRIAM REGARD-
ING DUES OR MEMBERSHIP MATTERS PLEASE
CALL 412-215-9545 OR E-MAIL
mandy6454@hotmail.com**

**TO REACH GEORGE REGARDING CONTRACT OR
MPTF MATTERS PLEASE CALL
412-855-5137 OR E-MAIL
president@afmpittsburgh.com**

**You may call the office number at 412-281-
1822 and leave a voice mail. No one will an-
swer. We will return your call.**

THANK YOU!

'BURGSOUNDS

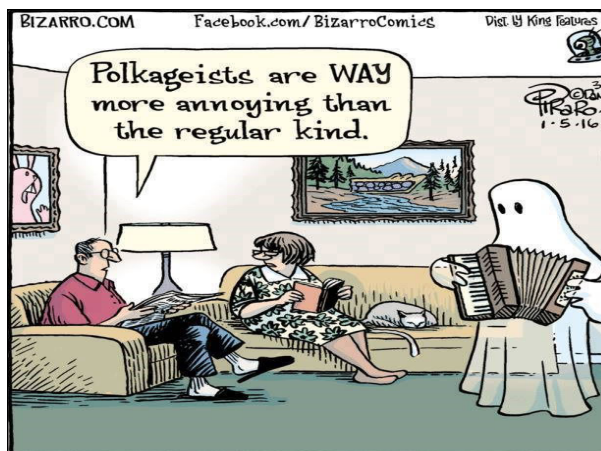
LOCAL 60-471 ELECTION

It is election time once again in Local 60-471 and that means that the coming October General Membership

(Continued on page 2)

(Continued from page 1)

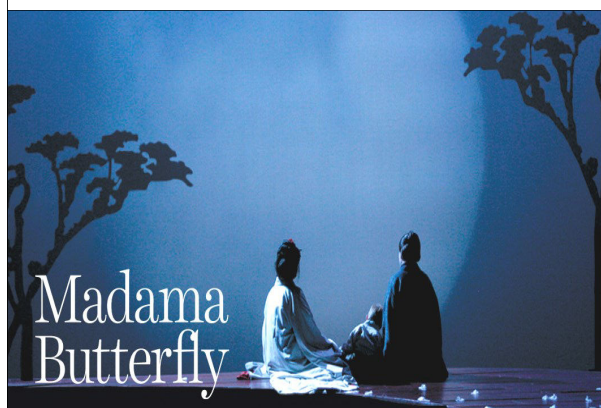
Meeting, as advertised above, will be the nominations meeting for all elected positions in our Local. If you are considering running for any office, it might be good to know just a bit about the duties of that office. Here is a thumbnail sketch of each office and the required duties that go with it. I do strongly suggest that you go to our website at www.afmpittsburgh.com and check out our bylaws which should give you a pretty fair idea of those complete duties and requirements. The **Vice-President** position requires attendance at all Monthly Executive Board meetings and also at the three General Membership Meetings. The Vice-President is charged with keeping the minutes of all meetings and submitting them to the Local for publishing in the *PITTSBURGH MUSICIAN*. The Vice-President may assume the duties of the President/Secretary if and when that Officer is incapacitated or otherwise unavailable. Regular Executive Board members or **Directors** are to be present for all monthly Executive Board meetings and the three General Membership Meetings. The Board has the right to enforce bylaws and our Price List and acts as trustees of the Local's monies and other holdings. We have a **Delegate to the AFM Convention** who is to attend that event usually held in the months of either June or July of convention years which occurs every 3 years. The year 2026 is a convention year. All expenses incurred relating to the convention are covered by the AFM. It usually requires about 5 days and 4 nights including travel. If you are not able to honor that commitment it is suggested that you do not seek that position. The **Alternate Delegate** to the convention is to serve in the delegate's stead in the unlikely event that the **Delegate** is unable to attend the convention. The **AFM Diversity Delegate** is a position created for merged locals where there was an African-American Local as well as another Local that were merged. That delegate also attends the AFM Convention. The **President/Secretary** position is somewhat unique in that it is considered a full-time position and has a long list of duties to perform. **Please refer to the bylaws for a detailed explanation.** In brief, The President/Secretary is the Chief Executive Officer of the Local and oversees the operation of the Local. Some duties that may not be listed in the Bylaws include keeping the books via the **QuickBooks accounting program**, managing the **MPTF on-line grant program**, and producing **4 newsletters per year** via the Microsoft Office Publisher program. The President/Secretary is also required to **oversee all 11 of the Local's CBA's and should be present at all bargaining sessions.** A number of the CBA's are produced in house by that officer. Of course the President/Secretary is in charge of all Ex. Board and General Membership meetings and asked to "be at the disposal of the Local at all times, subject to reasonable allowance for vacations, illnesses, emergencies, and personal obligations." By virtue of the office, the President/Secretary also attends the AFM Convention. The 2 Officers, and 5 Directors make up the **Executive Board** and are the governing body



between General Meetings. As mentioned, **for a detailed accounting of all duties of all positions please refer to our Local Bylaws found on afmpittsburgh.com**

MADAMA BUTTERFLY

The Pittsburgh Opera put on a production of Puccini's *Madama Butterfly* in March at the Benedum Theater for the Performing Arts right in downtown Pittsburgh, PA. For those who don't know, the Pgh. Opera has performances beginning with opening night on a Saturday followed by Tuesday and Friday evening performances and ending with a Sunday afternoon performance. *Madama Butterfly* also included a Thursday student matinee performance as well. Always nice for our musicians to make a few more dollars! The typical rehearsal schedule for a main stage production



includes 3 rehearsals at the Pittsburgh Opera building located in the "Strip District" and two dress rehearsals at the Benedum. As a side note, one rehearsal at the Opera building is called a **sitzprobe**, the name of which always reminds me of the '50's sci-fi movie "Invaders From Mars"!! Anyway, as always, I got my usual seat way up in the rafters where I like the sound much better. This opera is actually based on a short story by American lawyer and writer John Luther Long. It is based on the recollections of his sister Jennie Correll who had been to Japan with her husband. It was published

(Continued on page 3)

(Continued from page 2)

in century Magazine in 1898 and adapted for the stage in 1900. Puccini based his 1904 opera Madama Butterfly on the stage play. The plot is well known about the U.S. Navy Lieutenant Pinkerton who meets the 17 year old geisha Cho-Cho-San and marries her. His duties take him away from Nagasaki but he promises to return. Well, you probably know the rest of the story so I won't go into it here. Suffice it to say, it didn't work out! The production worked out quite well though. The opera was excellent with some fantastic singers on stage, and with great lighting and sets. As always, the **Pittsburgh Opera Orchestra** showed why it was in the pit for this and all main stage productions. **Nobody does it better! Congrats to all!!**

MPTF REVISITED

I don't want to "belabor the point" when it comes to the MPTF grant program, but I do wish to make everyone aware of the fact that there is free money available for real live gigs all over the Pittsburgh area. As you know, if you've been reading this journal for the past few years or so, we have placed great emphasis on this grant program in the hope that many of our members would take advantage of the available dollars and apply for MPTF projects. And guess what? Many of you have to the tune of between 75 and 80 projects in each of the past 2 years. **A new modern day record here.**

We do have quite a few newer members since we started this campaign to elevate MPTF awareness in our Local so I do want to give it all a mention here for the benefit of those folks. Some ask, "What's the catch?" Well, there really isn't one but the thing that you need to keep in mind is that a co-sponsor is required in order to make it all work. For example, if you go to a potential co-sponsor such as a library, school, senior center, medical facility, or community to suggest this program, the co-sponsor will generally have to cover half of the expense. **We want to be clear about the fact that most projects are done as a 50/50 split between the co-sponsor and MPTF. This is the original idea behind the program. Now there are instances where we can do 100% funding. If you read the last newsletter you know that we will submit a limited number of projects at 100%. How long we will be able to do this is totally up in the air at this time.** For this MPTF fiscal year, May 1, 2025 thru April 30, 2026 we have set parameters for this funding. I would ask that you refer back to the 2nd quarter newsletter which either showed up in your computer's inbox or is available on-line. Be aware that at the end of this MPTF fiscal year which is April 30, 2026, we will revisit everything that



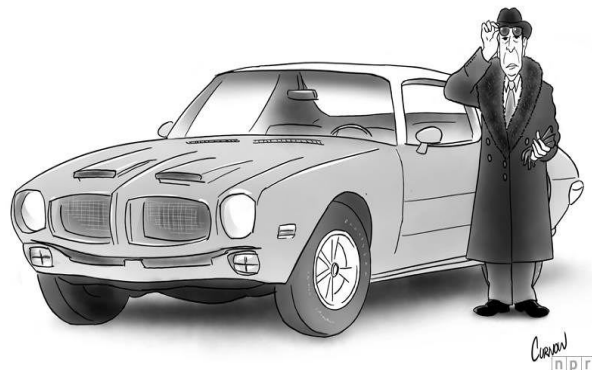
we are doing to re-evaluate whether or not we can still operate in the same fashion. **My guess is that we will need to make further adjustments to get closer to the original idea of 50/50 splits in funding.** We will see what we will see. Moving on, if you find a co-sponsor, that co-sponsor will need to submit a **W-9 form** to the Local to prove exactly who they are and a signed **Terms and Conditions form** as well which we provide. We do all of the calculations regarding the total cost of the program (project) and submit to MPTF for approval. The cost is based on Local 60-471 miscellaneous scale. The base rate is \$120.00 for a side person plus pension, cartage, where applicable, and travel. The leader fee is a bit more with an added \$8.00 plus an additional \$4.00 per side person. The length of these gigs can vary from 1 hour to an hour and a half tops with most being an hour in length. Community concerts in a park and the like are usually booked at 1.5 hours. If you play one of these gigs you've got a large portion of your dues covered for the year and in some cases you've surpassed that number. (Honorary Life) MPTF does require a contact person and contact info for the co-sponsor. For any further information, please call me at **412-855-5137** or you may e-mail me at **president@afmpittsburgh.com** and we can go over the entire process, most of which I've laid out here. We are here to help you navigate through all of this. The gigs are out there. It's first come first serve so happy hunting! BTW- I believe that, outside of our 11 CBA's, the MPTF grant program is the absolute best perk that the Union has to offer prospective Union members. **We will be pursuing that full ahead coming soon!**

THANK YOU

Oftentimes, I think to send a thank you to a member for their membership in our Local but somehow never

(Continued on page 4)

Stravinsky's Firebird



"It all matters!" ~ anon.

'BURG SCENES



Bassist Brian Stahurski performing at Con Alma. Hey Paula Tuttle. Watch out for that street car!! Remembering Chuck Austin, a great trumpet player and an even better person. Me at the Dobbin house in Gettysburg for a music festival. Scary huh!

(Continued from page 3)

get around to it. With just two people in our office versus the four that we had when I started here, it's one thing to plan to do something and another thing to actually make it happen. I do want to take just a moment to extend my thanks to all of our members and especially our long-term members who have achieved **Honorary Life** status and those who are very close to that pinnacle. **For the record, one must be a member here for 35 continuous years and have reached the age of 65 to qualify.** We have 138 such members at this writing and Local 60-471 would not be what it is without all those folks who have hung in there with us over that many years and in many cases so many more. We have quite a few members who have been with us for 50 years

plus, a fair number over 60 years and even a few over 70 years. Truly remarkable. It's my hope that many of our younger members will be around here long enough to eventually become Honorary Life members as well. It's really more than just a number, at least to many of us. A lot of our long-term members have quite a soft spot in our hearts for this local. I've had conversations with many older members who have expressed this sentiment to me over the years. It's the camaraderie of working with our peers over a very long time. It's the get togethers at General Membership Meetings, Old-Timers Parties, hanging out after a gig, and so much more. In many cases, life long relationships have developed via Union membership. Couples have met thru their mem-

(Continued on page 5)

(Continued from page 4)

bership here and have married. I should know! I've had many members tell me that they would never give up their Union membership no matter what. We do have quite a few older members who are no longer playing but carry their Pittsburgh Musicians' Union membership cards proudly. I know of some members who still have every membership card that they ever had! Why would they keep them if not for the fact that it truly means something to them. That card is more than just a piece of cardboard. It represents many decades of being a professional musician and striking up friendships with others and making music with them. There really is nothing else like it that I've ever experienced. It's dollars in our pockets but really so much more for many of us. If you're fairly new to the Local, this might not register with you now but I can guarantee you that it will over time. I've had no regrets about anything regarding the music business or this Local. They both mean a great deal to me and always will. Anyway, I tend to get a bit longwinded here in the journal at times so let me end this topic with a **BIG THANKS TO ALL for being members of our Pittsburgh Musicians' Union.** And to those who have been with us for 35, 40 or 50 years plus, a special thank you for your service to and support of our Pittsburgh Musicians' Union!

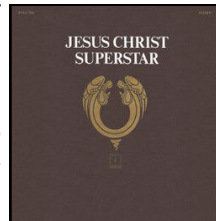
EXTREMELY IMPORTANT NOTICE

I want to redirect your attention to the green box on page one of the newsletter. The Local has implemented **new contact information** that you need to be aware of. I often receive phone calls or e-mails regarding dues, an area which I do not deal with here. Office Manager **Miriam Lesikiewicz** is the one to contact about dues or other membership matters. She will be happy to assist you with anything you may need in those areas. I often do not have the information needed to answer a question about what is currently owed by a particular member. Miriam usually has that info at her fingertips. This way you will receive a prompt and accurate response to any question including your status as a Regular Member or Honorary Life Member. Miriam is on top of that and can easily tell you when you will be transitioning from Regular to Life Membership. If you need information regarding a CBA or are inquiring about our MPTF program, please dial my cell number in the green box. Please note the suggested e-mails as well. **If you dial our office number at 412-281-1822, you will be connected to our voice mail. You will not be able to speak with anyone. Please feel free to leave us a message. We will return your call. Also see page 11.** Thank you for reading.

PITTSBURGH MUSICAL THEATER

This past April, Pittsburgh Musical Theater presented the Andrew Lloyd Webber musical Jesus Christ Superstar at the Byham Theater in downtown Pittsburgh. Let

me be perfectly candid here. When I write about a performance featuring our members, I have usually been in attendance at that performance. In this particular instance, I was regrettably unable to see this show. I did, however, want to give this a mention here in the journal. My info is second hand from some friends who were in attendance at a weekend matinee but I trust their opinions implicitly! While we've all seen various versions of this musical over many decades, I'm told that this production captured the essence and spirit of the show as well or better than many others that we've all seen over the years. Pittsburgh Musical Theater, for those who don't know, was the brain child of **Ken Gargaro** and was originally Gargaro Productions for many years. Ken, BTW, is a member here in Local 60-471 and a really fine musician and gentleman I might add. Back in the day, Ken and I would negotiate the PMT agreement over the phone. Took about two phone calls! These days we negotiate with Executive Director **Colleen Doyno** and **Francesca Tortorello** whose title there is Resident Music Director. BTW, the current CBA took us only 1 meeting with Executive Board member **Joe Herndon** on board for the Union as well. Francesca serves as contractor, pianist, and much more at PMT. As an aside, I also know that Francesca and her husband PSO cellist **Michael DeBruyn** do many outstanding duo performances in and around the Pittsburgh Area throughout the year. PMT is highly into arts education with a



(Continued on page 6)



"There are two kinds of worries-those that you can do something about and those you can't. Don't spend any time on the latter." ~ Edward Kennedy "Duke" Ellington

(Continued from page 5)

conservatory offering training year round for students ages 4-18. They hold a summer camp as well. Lots going on over there in the West End of Pittsburgh. As to JC Superstar, I won't go into a long-winded narrative here but my sources told me that this was another home run for PMT. The staging was excellent and the vocalists did a suburb job. As you might know, the most important part of it all for me is always the Local 60-471 orchestra. I'm told this one was truly outstanding and why not? As I have said over and over again in this journal, Pittsburgh boasts some of the finest musicians you will ever hear on stage or in the pit. Since the orchestra was relatively small, I'd like to give a shout out to those who played the show and did an amazing job! The musicians on board were **Alex Kenrick, guitar, Paul Thompson, bass, Lindsey Lamagna, and R.J. Heid** splitting the services on **drums**, and, of course, **Francesca Tortorello on keyboard**. Congratulations to all! Always a great time at a Pittsburgh Musical Theater performance. Their season features shows at both the Byham Theater downtown and Gargaro Theater at their facility in the West End as well as other venues on occasion. Hope to see you at a PMT show soon!

WORKERS MEMORIAL DAY

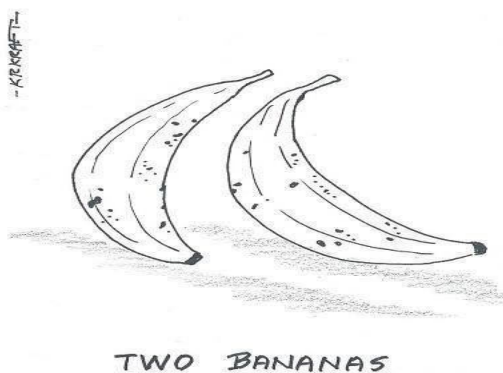
Every year in our country, thousands of workers die from on the job injuries or illness caused by their work environment. This is marked and noted in a memorial service held each April across the country. Here in Pittsburgh, that memorial service coordinated by the Allegheny County Labor Council was held this year at the Steel Building plaza on Stanwix Street.. The names of all local workers whom we lost this past year are read and a bell is rung for each. A very somber ceremony. To cap off the service, the Pittsburgh Musicians' Union has always provided two trumpet players to play taps. This year **Ralph Guzzi** and **Alex Perez**

performed those duties and did a great job! My thanks to both for their service to the ACLC and the Pittsburgh Musicians' Union.

WHEELING LOCAL-142

Every now and then, I am asked a question about the Wheeling, WV Local by members here who also happen to belong to 142 and play in the WSO. Things like, why can't Local 60-471 take over Local 142, or why are the work dues so high there, or do I have to belong there, etcetera. So I thought that I'd write a relatively short piece on that Local and why you should belong, especially if you play for the Wheeling Symphony Orchestra. First, the bad news. West Virginia is a "right to work" state. What does that really mean? Well, to me and all Union folks it simply means **the right to work for less!** That being said, there is still a Local there and it's responsible for seeing that there is a Union contract between that Local and the WSO. There really is no obligation to join the Local there since it is right to work. However, here's a scenario that no one would want to see. First, if you are not a Union member, you lose any voice that you may have in the workplace. Also, you will not be able to attend orchestra meetings, can't vote on the contract proposal, and can't even serve on the OC (Orchestra Committee). Here's the real kicker. If enough musicians opt not to join 142, the employer (WSO) can determine that the Local no longer has majority support and can terminate the CBA when it expires and end Union representation altogether. Then the musicians are really screwed. Pardon the French! This is, of course, a worst case scenario but we've been seeing lots of worst case scenarios lately so you can't rule it out. So the best answer to it all is to strap in and maintain your Local 142 membership and if you are not a member, please consider joining to protect the rights that you will

(Continued on page 7)



"A good listener is not only popular everywhere, but after a while, he gets to know something." ~ Wilson Mizner, US playwright and author

(Continued from page 6)

have as a member there as well as the rights of others. I do know that many musicians maintain multiple Local memberships which is contractually necessary due to the work that they do in those Locals. In my household, there are four Locals represented. Local 60-471 Pittsburgh, Local 142 Wheeling WV, Local 294 Lancaster, PA, (Lancaster and Harrisburg recently merged) and Local 136 Charleston WV. It's a way of life for many musicians who perform with several regional orchestras situated in various Locals. Of course there is a rebate for musicians who perform in 3 or more Locals and it's something that should be taken advantage of on a yearly basis. **The bottom line is support the AFM in every way that you can.** The best way that I know to do that is to join in the jurisdictions in which you play. If Wheeling happens to be one of them, be a member there! Thanks for reading.

MARK CUSTER

Sadly, we lost a long-time member here recently with the untimely passing of trumpeter **Mark Custer** on May 8th. I would like to write just a few words about Mark to honor his memory. We often lose members here who have lived into their 80's and 90's and, on rare occasions, even to 100+. In Mark's case, however, he was only 58 years of age according to our records here at the Local. Mark graduated from Carnegie Mellon University's School of Music in 1988 and had been a stalwart performer with the River City Brass Band for the better part of 40 years. Mark also performed with many other groups as well including Johnny Angel and the Halos, The Blues Orphans, and Guaracha. I got to know

him pretty well over the years and I liked what I knew. I had Mark play taps quite a few times for the Workers Memorial Day service in Market Square for the ACLC and he could always be counted on to give a solid performance. Mark also shared his musical gift over many years having taught trumpet privately to many young people while providing a positive influence for them. It was pretty much all about the music for him. There really isn't much more to say here other than Mark was a really good guy who is gone way too soon. I'll truly miss our conversations over the phone or seeing him performing on stage. Rest in peace, Mark. You truly deserve that!

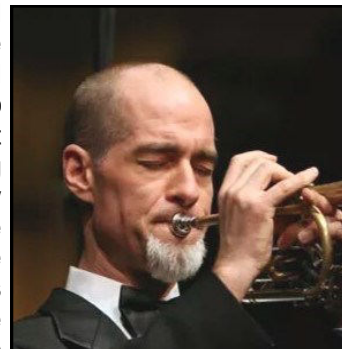
PITTSBURGH SYMPHONY ORCHESTRA

I made the trip to Heinz Hall recently to catch a performance by one of the world's greatest orchestras. Do I have to name them? The Pittsburgh Symphony put on quite a show as Beatrice Rana, a fantastic pianist performed an inspired version of Mendelssohn's Piano Concerto No.1. Also on the program was Lera Auerbach's "Frozen Dreams", a world premiere. Last but not least the PSO performed Shostakovich's Symphony No. 10 in honor of the 50th anniversary of his death. Pianist Beatrice Rana has performed at some of the world's esteemed concert halls and festivals including the Berlin Philharmonie, New York's Carnegie Hall and Lincoln Center, London's Royal Albert Hall, Boston's Symphony Hall and the Hollywood Bowl to name just a few. Mendelssohn's Piano Concerto No. 1 in G minor was written in 1830-31, around the same time as his fourth symphony and premiered in Munich in October of 1831. Beatrice Rana did this concerto proud and no wonder she has performed all over the world! Pretty dazzling!

The Frozen Dreams premiere by Lera Auerbach was very interesting and something just a bit different. It is a 12 minute work and according to Auerbach herself is "a reflection on sound, memory, and the uncertainty of time." Whatever it was, the orchestra played it in a superb manner as one would expect.

The Shostakovich was probably the highlight of the concert for the majority in attendance. This was premiered by the Leningrad Philharmonic Orchestra under Yevgeny Mravinsky on December 17, 1953. There seems to be uncertainty as to when it was written but some think 1951 was the year but sketches for some of the material seem to date from 1946.

(Continued on page 10)



"Commitment requires service and sacrifice." ~ Jon Gordon

Pittsburgh Musicians' Union
Executive Board Meeting
Via Zoom
3 /11/25

Meeting called to order at 6:08pm.

Attendance-All members were present.

Minutes read from previous meeting. Motion to accept as amended by Stephanie Tretick and seconded by Joe Herndon. Motion carried unanimous.

Financials were reviewed.

Resignations-There was one resignation. Motion to accept by with regrets by Tom Evans and seconded by Andy Yalch. Motion carried unanimous

Deaths-No deaths to report.

Price List Committee - Will meet next week to make recommendations for miscellaneous scale for 2026.

MPTF-This program will hopefully continue in its current positive direction.

By-Laws-The board suggested making the price list committee meetings every 2 years.

Next Board meeting will be on 4/22/25 at 6:00 pm.

Motion to adjourn by Tom Evans and seconded by Elliott Ratliff. Motion carried unanimous.

Meeting adjourned at 6:30 pm.

Respectfully submitted by Andy Yalch-Vice President.

"A MAN IS JUDGED BY THE COMPANY HE KEEPS, AND A COMPANY IS JUDGED BY THE MEN IT KEEPS, AND THE PEOPLE OF DEMOCRATIC NATIONS ARE JUDGED BY THE TYPE AND CALIBER OF OFFICIALS THEY ELECT." ~ William H. Boetcker

Pittsburgh Musicians' Union
Executive Board Meeting
Via Zoom
4 /22/25

Meeting called to order at 6:12 pm.

Attendance-All members were present.

Minutes read from previous meeting. Motion to accept as amended by Elliott Ratliff and seconded by Stephanie Tretick. Motion carried unanimous.

Financials were reviewed.

New Members-There was 5 new members. Motion to accept by Tom Evans and seconded by MaryBeth Schotting- Motion carried unanimous.

Yeokyoung Kim-03/21/2025, Violin

Laura C. Lamb (Student)-04/01/2025, Percussion, Timpani

Ilkhom Mukhiddinov (Student)-03/08/2025, Violin

Regi Papa-03/21/2025, Violin

Alan P. Skwarla-04/01/2025, Trumpet, Flugelhorn

Reinstatements-There was one reinstatement. Motion to accept by Joe Herndon and seconded by Elliott Ratliff. Motion carried unanimous.

Natalie S. Moss

Resignations-There were eight resignations. Motion to accept with regrets by Andy Yalch and seconded by Stephanie Tretick. Motion carried unanimous.

Reagan D. Miller-effective December 31, 2024

David J. Banks-effective December 31, 2024

Joanna Y. Lau-effective December 31, 2024

Douglas J. Levine-effective December 31, 2024

Charles E. Lirette-effective December 31, 2024

Lorna McGhee-effective December 31, 2024

Amelia W. Van Howe-effective December 31, 2024

Tara Yaney-effective December 31, 2024

Deaths-There was one death to report. A moment of silence was held in memoriam.

Nick J. Cheberenchick- Died 10/23/2024, Violin

By-Laws-Make amendment to change by-law regarding Pricelist Committee to meet semi-annually rather than annually at next General Meeting.

Eastern Conference-Elliott Ratliff will represent our local at the next meeting. Elliott is the Vice President of the Eastern Conference.

General Meeting -The next General Meeting will be on May5th at Geatanos Restaurant at 7:00 pm.

"I have learned throughout my life as a composer chiefly through my mistakes and pursuits of false assumptions, not by my exposure to founts of wisdom and knowledge.

~ Igor Stravinsky

Next board meeting will be on 5/20/25 at 6:00 pm.

Motion to adjourn by MaryBeth Schotting and seconded by Elliott Ratliff. Motion carried unanimous.

Meeting adjourned at 6:40 pm.

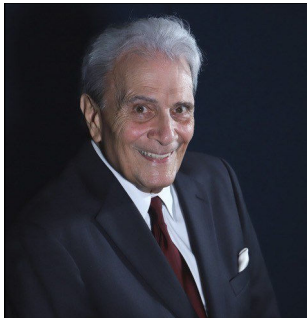
Respectfully submitted by:
Andy Yalch, Vice President.

(Continued from page 7)

Shostakovich had this to say of the 10th, "I did depict Stalin in my next symphony, the tenth. I wrote it right after Stalin's death and no one yet guessed what the symphony is about. It's about Stalin and the Stalin years. The second part, the scherzo, is a musical portrait of Stalin, roughly speaking. Of course, there are many other things in it, but that's the basis." There is some disagreement over what was intended in the work but there can be no disagreement as to the performance of this symphony by the orchestra. The PSO can cause the walls to shake and in the next minute make you strain to hear what follows. A great orchestra and to think that they are right on our doorstep in downtown Pittsburgh in beautiful Heinz Hall. It's said that good art of any kind can change your field of perception. Can literally change you. The rest of my evening was totally different after this performance and when I woke up the next morning, it was still different. I'll leave it there.

CHUCK SPATAFORE

We lost whom I consider to be an iconic member of our Local when drummer Chuck Spatafore passed away on June 20th of this year. If you knew Chuck, you know how I feel about his passing. Chuck was a self taught drummer who could swing with the best of them. Truly a mainstay on the music scene here! I had some opportunities to play with him and Chuck was always fun to be around to say the least! Lots of stories, lots of laughs! Chuck was in on the early days of Pittsburgh TV and I can remember as a kid seeing him on KDKA with the likes of **Johnny Costa**, **Joe Negri** and **Jimmy DeJulio** on the John Reed King Show among others. Chuck never lacked for work back in the day and deservedly so. He had a great combo years later with musicians like **Danny Conn**, **Joe Dallas**, and **Mike Tomaro** and played one of our Old-Timers parties in Oakland at Duranti's. with that group.



Chuck was a fixture at that event for decades and a guy who could light up the room just by walking thru the door. He was as sharp of a dresser as I have ever met and all class on and off the bandstand. He was a pretty tough dude who coached the Western Penitentiary football team for a number of years. Chuck was probably tougher than any of his players. I think they won a lot of games! I don't believe that I ever saw Chuck really down about anything for very long. Always upbeat. If there's one thing that I think I'll remember more than anything else about Chuck it would be his infectious smile and that he was such a sweet guy. Chuck, rest in peace!

FINAL THOUGHTS

In closing, let me say that this sacred trust called the Pittsburgh Musicians' Union that I've been charged with has become a labor of love over the years. It's certainly well worth fighting for and we'll continue to fight for what's right for our members as long as we can. They say that a chain is only as strong as its weakest link and so it is with this organization as well. We all need to support one another and this Union to the max if we are to continue to be what we are meant to be. To me that's a safe haven in a storm of discontent over the very existence of Unions in our political climate today. This isn't one or two or a handful of people driving this Union forward. It does take everybody doing their fair share for us to prevail against those who would see all Unions go down in flames in the end. We are attacked on all fronts from Pennsylvania Avenue on down. We need to be strong or lose whatever power we have in the workplace. Not just me or the Executive Board or some orchestra committees but EVERYONE! Further, I can't tell you how much I appreciate those members who are retired from the Opera Orchestra, PSO, River City, or wherever who still maintain their membership in this Local. It doesn't always happen that way but your continuing membership and support is truly appreciated. We were there for you when you needed us. Please continue to support us if you are at all able to do so!

And as always, please take good care of yourselves. You're all we've got!

George

Pittsburgh Musicians' Union
Executive Board Meeting
Via Zoom
5 /23/25

Meeting called to order at 6:02 pm.

Attendance-All members were present.

Minutes read from previous meeting. Motion to accept as amended by Stephanie Tretick and seconded by Elliott Ratliff. Motion carried unanimous.

Financials were reviewed.

New Members-There were four new members. Motion to accept by Tom Evans and seconded by Joe Herndon- Motion carried unanimous.

Omari Abdul-Alim-05/29/2025, Violin, Viola

Hudson T. Orfe (Student)-05/29/2025, Piano

Emilia Poirier-Molina-06/23/2025, Violin

Yevgeny Faniuk-06/09/2025, Flute

Resignations-There were three resignations. Motion to accept with regrets by Stephanie Tretick and seconded by MaryBeth Schotting. Motion carried unanimous.

Andrew D. Augustine-effective June 30, 2025

Amelia Van Howe-effective December 31, 2024

Patricia Zawadski-effective December 31, 2024

Deaths-Charles J. Spatafore-Died 06/20/2025, Drums

Membership Drive Suggestions-Use MPTF as an initiative to join the Local.

Next board meeting will be on 6/23/25 at 4:00 pm.

Motion to adjourn by Elliott Ratliff and seconded by Joe Herndon. Motion carried unanimous.

Meeting adjourned at 6:34 pm.

Respectfully submitted by Andy Yalch, Vice President.

NEW CONTACT INFORMATION

TO REACH OFFICE MANAGER MIRIAM LESIKIEWICZ
FOR DUES OR MEMBERSHIP MATTERS:

CALL 412-215-9545 OR

E-MAIL mandy6454@hotmail.com

TO REACH PRESIDENT/SECRETARY GEORGE CLEWER
FOR CONTRACT OR MPTF MATTERS:

CALL 412-855-5137 OR

E-MAIL president@afmpittsburgh.com

IF YOU DIAL OUR OFFICE NUMBER 412-281-1822 YOU
WILL REACH OUR VOICE MAIL WHERE YOU MAY
LEAVE A MESSAGE. WE WILL RETURN YOUR CALL.

IT IS VITALLY IMPORTANT THAT YOU ARE ABLE TO
REACH US. WE ARE HERE TO SERVE YOU TO THE
BEST OF OUR ABILITY TO DO SO. WE ARE CONFIDENT
THAT OUR NEW CONTACT INFO WILL ULTIMATELY
MAKE THAT PROCESS MUCH EASIER FOR ALL.

IT IS SUGGESTED THAT YOU PRINT THIS PAGE AND
KEEP IT HANDY TO REFER TO WHEN YOU NEED TO
CONTACT US FOR ANY REASON.

THANK YOU FOR YOUR PATIENCE, UNDERSTANDING,
AND COOPERATION!

gc

**Nonprofit Org.
U.S. Postage Paid
Pittsburgh, PA
Permit No. 0268**

In order to protect the interests of the Union, we hold that the opinions, statements, articles or paid advertisements appearing in the Pittsburgh Musician must be signed by the person submitting same and that these opinions are strictly those of the signers. Publication does not necessarily reflect the opinion of the Union.

Pittsburgh Musician

Advertising Rates — Display Ads Payable in Advance

Deadline — Two Weeks Prior to Publication

MEMBER RATES	
FULL PAGE.....	\$100.00
HALF PAGE.....	50.00
QUARTER PAGE.....	25.00
EIGHTH PAGE.....	15.00
NON-MEMBER RATES	
FULL PAGE.....	\$120.00
HALF PAGE.....	75.00
QUARTER PAGE.....	40.00
EIGHTH PAGE.....	25.00

Ads Must Be Camera-Ready!

The Pittsburgh Musicians' Union
*reserves the right to refuse
any advertisement*

George A. Clewer.....Editor
The right is reserved to reject any advertisement
or material submitted.
Pittsburgh Musicians' Union
Local 60-471, A.F.U. of M., A.F.L.-C.I.O.
564 Forbes Avenue, Suite 1112
Pittsburgh, PA 15219-2909
Phone: 412-281-1822
Website: www.afmpittsburgh.com